

Flute

Star Spangled Banner / Alma Mater

arr McKinney

Star Spangled Banner

Musical notation for the first system of the Star Spangled Banner section, measures 1-8. The key signature is B-flat major (two flats) and the time signature is 3/4. The melody begins with a quarter rest, followed by a quarter note G4, a quarter note A4, and a quarter note B4. The piece concludes with a double bar line and repeat dots.

Musical notation for the second system of the Star Spangled Banner section, measures 9-17. Measure 9 starts with a first ending bracket over measures 9-10, with a '2.' marking above measure 10. The melody continues with eighth and quarter notes.

Musical notation for the third system of the Star Spangled Banner section, measures 18-25. Measure 18 begins with a first ending bracket over measures 18-20, with a '2.' marking above measure 20. The section ends with a double bar line and repeat dots.

Alma Mater

Musical notation for the first system of the Alma Mater section, measures 26-34. The key signature changes to D-flat major (three flats) and the time signature is 4/4. The melody starts with a quarter rest, followed by a quarter note G3, a quarter note A3, and a quarter note B3. A dynamic marking of *f* (forte) is placed below the first measure.

Musical notation for the second system of the Alma Mater section, measures 35-42. This system features a complex rhythmic pattern with many beamed eighth notes and accents (>) above several notes.

Flute

Star Spangled Banner / Alma Mater

arr McKinney

Star Spangled Banner

Musical notation for the first system of the Star Spangled Banner section, measures 1-8. The key signature is B-flat major (two flats) and the time signature is 3/4. The melody begins with a quarter rest, followed by a quarter note G4, a quarter note A4, and a quarter note B4. The piece concludes with a double bar line and repeat dots.

Musical notation for the second system of the Star Spangled Banner section, measures 9-17. Measure 9 starts with a first ending bracket over measures 9-10, with a '2.' marking above measure 10. The melody continues with eighth and quarter notes.

Musical notation for the third system of the Star Spangled Banner section, measures 18-25. Measure 18 begins with a first ending bracket over measures 18-20, with a '2.' marking above measure 20. The section ends with a double bar line and repeat dots.

Alma Mater

Musical notation for the first system of the Alma Mater section, measures 26-34. The key signature changes to D-flat major (three flats) and the time signature is 4/4. The melody starts with a quarter rest, followed by a quarter note G3, a quarter note A3, and a quarter note B3. A dynamic marking of *f* (forte) is placed below the first measure.

Musical notation for the second system of the Alma Mater section, measures 35-42. This system features a complex rhythmic pattern with many beamed eighth notes and accents (>) above several notes.

Clarinets in B \flat

Star Spangled Banner / Alma Mater

arr McKinney

Star Spangled Banner

Musical notation for the first system of the Star Spangled Banner. It begins with a treble clef, a 3/4 time signature, and a key signature of one flat (B \flat). The first measure is marked with a repeat sign and a first ending bracket. The second measure is marked with a repeat sign and a first ending bracket. The notation includes various chords and melodic lines. A 'div.' (divisi) instruction is placed below the first measure. The system ends with a double bar line and a 4/4 time signature change.

Alma Mater

Musical notation for the second system of the Alma Mater. It begins with a treble clef, a 4/4 time signature, and a key signature of one flat (B \flat). The first measure is marked with a repeat sign and a first ending bracket. The notation includes various chords and melodic lines. A 'f' (forte) dynamic marking is placed below the first measure. The system ends with a double bar line and a 4/4 time signature change.

Clarinets in B \flat

Star Spangled Banner / Alma Mater

arr McKinney

Star Spangled Banner

Musical notation for the first system of the Star Spangled Banner. It begins with a treble clef, a 3/4 time signature, and a key signature of one flat (B \flat). The first measure is marked with a repeat sign and a first ending bracket. The second measure is marked with a repeat sign and a first ending bracket. The notation includes various chords and melodic lines. A 'div.' (divisi) instruction is placed below the first measure. The system ends with a double bar line and a 4/4 time signature change.

Alma Mater

Musical notation for the second system of the Alma Mater. It begins with a treble clef, a 4/4 time signature, and a key signature of one flat (B \flat). The first measure is marked with a repeat sign and a first ending bracket. The notation includes various chords and melodic lines. A 'f' (forte) dynamic marking is placed below the first measure. The system ends with a double bar line and a 4/4 time signature change.

Star Spangled Banner / Alma Mater

Bass Clarinet

arr McKinney

Star Spangled Banner

Musical notation for the first system of the Star Spangled Banner section, measures 1-8. The key signature has one sharp (F#) and the time signature is 2/4. The notation includes a repeat sign at the beginning and a double bar line at the end.

Musical notation for the second system of the Star Spangled Banner section, measures 9-18. It includes a first ending bracket with a '2.' marking above it.

Musical notation for the third system of the Star Spangled Banner section, measures 19-25. The key signature changes to two flats (Bb, Eb) and the time signature changes to 4/4. The section ends with a double bar line.

Alma Mater

Musical notation for the first system of the Alma Mater section, measures 26-34. The key signature has two flats (Bb, Eb) and the time signature is 4/4. A dynamic marking of *f* (forte) is present below the first measure.

Musical notation for the second system of the Alma Mater section, measures 35-42. The notation includes various articulation marks such as accents and slurs.

Star Spangled Banner / Alma Mater

Bass Clarinet

arr McKinney

Star Spangled Banner

Musical notation for the first system of the Star Spangled Banner section, measures 1-8. The key signature has one sharp (F#) and the time signature is 2/4. The notation includes a repeat sign at the beginning and a double bar line at the end.

Musical notation for the second system of the Star Spangled Banner section, measures 9-18. It includes a first ending bracket with a '2.' marking above it.

Musical notation for the third system of the Star Spangled Banner section, measures 19-25. The key signature changes to two flats (Bb, Eb) and the time signature changes to 4/4. The section ends with a double bar line.

Alma Mater

Musical notation for the first system of the Alma Mater section, measures 26-34. The key signature has two flats (Bb, Eb) and the time signature is 4/4. A dynamic marking of *f* (forte) is present below the first measure.

Musical notation for the second system of the Alma Mater section, measures 35-42. The notation includes various articulation marks such as accents and slurs.

Tenor Sax Star Spangled Banner / Alma Mater

Star Spangled Banner

arr McKinney

Musical notation for the first part of the piece, measures 1 through 18. It begins with a treble clef and a 3/4 time signature. The melody starts with a quarter rest, followed by a quarter note G4, a quarter note A4, and a quarter note B4. A first ending bracket spans measures 1-3, with a 'div.' (divisi) instruction below. The melody continues with quarter notes C5, D5, E5, F5, G5, A5, B5, and C6. A second ending bracket spans measures 9-18, with a '2.' (second ending) instruction above. The melody concludes with quarter notes D5, C5, B4, A4, G4, F4, E4, D4, C4, and B3.

Alma Mater

Musical notation for the second part of the piece, measures 19 through 33. It begins with a treble clef and a 4/4 time signature. The melody starts with a whole rest, followed by a half note G3, a half note A3, and a half note B3. A dynamic marking of *f* (forte) is placed below the first measure. The melody continues with quarter notes C4, D4, E4, F4, G4, A4, B4, and C5. A fermata is placed over the C5 note. The melody concludes with quarter notes B4, A4, G4, F4, E4, D4, C4, and B3.

Tenor Sax Star Spangled Banner / Alma Mater

Star Spangled Banner

arr McKinney

Musical notation for the first part of the piece, measures 1 through 18. It begins with a treble clef and a 3/4 time signature. The melody starts with a quarter rest, followed by a quarter note G4, a quarter note A4, and a quarter note B4. A first ending bracket spans measures 1-3, with a 'div.' (divisi) instruction below. The melody continues with quarter notes C5, D5, E5, F5, G5, A5, B5, and C6. A second ending bracket spans measures 9-18, with a '2.' (second ending) instruction above. The melody concludes with quarter notes D5, C5, B4, A4, G4, F4, E4, D4, C4, and B3.

Alma Mater

Musical notation for the second part of the piece, measures 19 through 33. It begins with a treble clef and a 4/4 time signature. The melody starts with a whole rest, followed by a half note G3, a half note A3, and a half note B3. A dynamic marking of *f* (forte) is placed below the first measure. The melody continues with quarter notes C4, D4, E4, F4, G4, A4, B4, and C5. A fermata is placed over the C5 note. The melody concludes with quarter notes B4, A4, G4, F4, E4, D4, C4, and B3.

Star Spangled Banner / Alma Mater

Trumpet in B \flat 1

arr McKinney

Star Spangled Banner

Musical score for Star Spangled Banner, Trumpet in B \flat 1, measures 1-17. The score is written in 3/4 time and includes a first ending bracket over measures 1-8 and a second ending bracket over measures 9-17. Measure 18 is the end of the piece, marked with a double bar line and a key signature change to B \flat major.

Alma Mater

Musical score for Alma Mater, Trumpet in B \flat 1, measures 18-34. The score is written in 4/4 time and includes a dynamic marking of *f* (forte) at the beginning of measure 26. Measure 35 is the end of the piece, marked with a double bar line.

Star Spangled Banner / Alma Mater

Trumpet in B \flat 1

arr McKinney

Star Spangled Banner

Musical score for Star Spangled Banner, Trumpet in B \flat 1, measures 1-17. The score is written in 3/4 time and includes a first ending bracket over measures 1-8 and a second ending bracket over measures 9-17. Measure 18 is the end of the piece, marked with a double bar line and a key signature change to B \flat major.

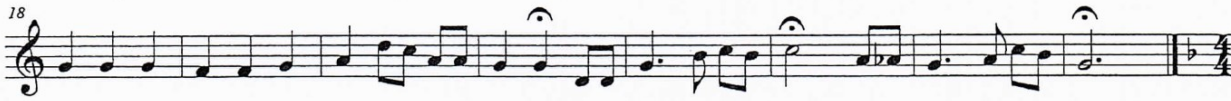
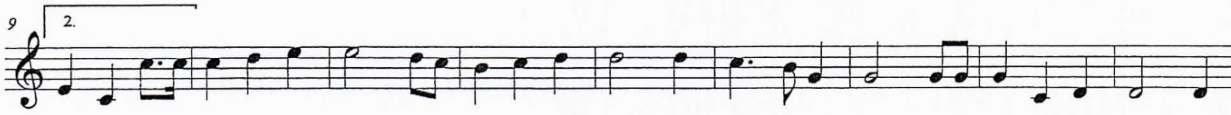
Alma Mater

Musical score for Alma Mater, Trumpet in B \flat 1, measures 18-34. The score is written in 4/4 time and includes a dynamic marking of *f* (forte) at the beginning of measure 26. Measure 35 is the end of the piece, marked with a double bar line.

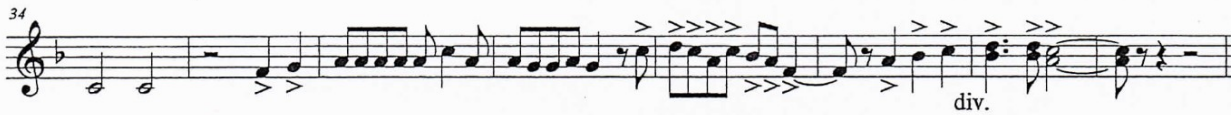
Trumpet in B \flat 2 Star Spangled Banner / Alma Mater

arr McKinney

Star Spangled Banner



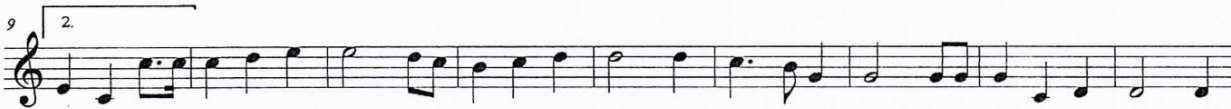
Alma Mater



Trumpet in B \flat 2 Star Spangled Banner / Alma Mater

arr McKinney

Star Spangled Banner



Alma Mater



Star Spangled Banner / Alma Mater

Horn in F

arr McKinney

Star Spangled Banner

Musical notation for the first system of the Star Spangled Banner section, measures 1-8. The key signature is one flat (Bb) and the time signature is 3/4. The notation includes a repeat sign at the beginning and a first ending bracket at the end.

Musical notation for the second system of the Star Spangled Banner section, measures 9-18. It includes a first ending bracket over measures 9-10 and a second ending bracket over measures 11-18.

Musical notation for the third system of the Star Spangled Banner section, measures 19-25. The key signature changes to two flats (Bb and Eb) and the time signature changes to 4/4. The notation includes a fermata over measure 25.

Alma Mater

Musical notation for the first system of the Alma Mater section, measures 26-35. The key signature is two flats (Bb and Eb) and the time signature is 4/4. The notation starts with a fermata and a dynamic marking of *f* (forte).

Musical notation for the second system of the Alma Mater section, measures 36-44. The notation includes accents (>) over several notes in measures 36-44.

Star Spangled Banner / Alma Mater

Horn in F

arr McKinney

Star Spangled Banner

Musical notation for the first system of the Star Spangled Banner section, measures 1-8. The key signature is one flat (Bb) and the time signature is 3/4. The notation includes a repeat sign at the beginning and a first ending bracket at the end.

Musical notation for the second system of the Star Spangled Banner section, measures 9-18. It includes a first ending bracket over measures 9-10 and a second ending bracket over measures 11-18.

Musical notation for the third system of the Star Spangled Banner section, measures 19-25. The key signature changes to two flats (Bb and Eb) and the time signature changes to 4/4. The notation includes a fermata over measure 25.

Alma Mater

Musical notation for the first system of the Alma Mater section, measures 26-35. The key signature is two flats (Bb and Eb) and the time signature is 4/4. The notation starts with a fermata and a dynamic marking of *f* (forte).

Musical notation for the second system of the Alma Mater section, measures 36-44. The notation includes accents (>) over several notes in measures 36-44.

Trombone Star Spangled Banner / Alma Mater

arr McKinney

Star Spangled Banner

Measures 1-8 of the Star Spangled Banner section. The music is in bass clef, 3/4 time, and B-flat major. It begins with a double bar line and a repeat sign. The first measure contains a half note G2, followed by quarter notes A2, B2, and C3. The second measure contains a half note D3, followed by quarter notes E3, F3, and G3. The third measure contains a half note A3, followed by quarter notes B3, C4, and D4. The fourth measure contains a half note E4, followed by quarter notes F4, G4, and A4. The fifth measure contains a half note B4, followed by quarter notes C5, B4, and A4. The sixth measure contains a half note G4, followed by quarter notes F4, E4, and D4. The seventh measure contains a half note C4, followed by quarter notes B3, A3, and G3. The eighth measure contains a half note F3, followed by quarter notes E3, D3, and C3. The word "div." is written below the first measure.

Measures 9-18 of the Star Spangled Banner section. Measure 9 starts with a first ending bracket over measures 9-10. Measure 11 has a second ending bracket over measures 11-12. The music continues with chords and melodic lines in bass clef, 3/4 time, and B-flat major.

Measures 19-25 of the Star Spangled Banner section. Measure 19 starts with a first ending bracket over measures 19-20. Measure 21 has a second ending bracket over measures 21-22. The music continues with chords and melodic lines in bass clef, 3/4 time, and B-flat major.

Measures 26-33 of the Alma Mater section. Measure 26 starts with a first ending bracket over measures 26-27. Measure 28 has a second ending bracket over measures 28-29. The music continues with chords and melodic lines in bass clef, 4/4 time, and B-flat major. The dynamic marking *f* is present below measure 26.

Measures 34-40 of the Alma Mater section. Measure 34 starts with a first ending bracket over measures 34-35. Measure 36 has a second ending bracket over measures 36-37. The music continues with chords and melodic lines in bass clef, 4/4 time, and B-flat major.

Trombone Star Spangled Banner / Alma Mater

arr McKinney

Star Spangled Banner

Measures 1-8 of the Star Spangled Banner section. The music is in bass clef, 3/4 time, and B-flat major. It begins with a double bar line and a repeat sign. The first measure contains a half note G2, followed by quarter notes A2, B2, and C3. The second measure contains a half note D3, followed by quarter notes E3, F3, and G3. The third measure contains a half note A3, followed by quarter notes B3, C4, and D4. The fourth measure contains a half note E4, followed by quarter notes F4, G4, and A4. The fifth measure contains a half note B4, followed by quarter notes C5, B4, and A4. The sixth measure contains a half note G4, followed by quarter notes F4, E4, and D4. The seventh measure contains a half note C4, followed by quarter notes B3, A3, and G3. The eighth measure contains a half note F3, followed by quarter notes E3, D3, and C3. The word "div." is written below the first measure.

Measures 9-18 of the Star Spangled Banner section. Measure 9 starts with a first ending bracket over measures 9-10. Measure 11 has a second ending bracket over measures 11-12. The music continues with chords and melodic lines in bass clef, 3/4 time, and B-flat major.

Measures 19-25 of the Star Spangled Banner section. Measure 19 starts with a first ending bracket over measures 19-20. Measure 21 has a second ending bracket over measures 21-22. The music continues with chords and melodic lines in bass clef, 3/4 time, and B-flat major.

Measures 26-33 of the Alma Mater section. Measure 26 starts with a first ending bracket over measures 26-27. Measure 28 has a second ending bracket over measures 28-29. The music continues with chords and melodic lines in bass clef, 4/4 time, and B-flat major. The dynamic marking *f* is present below measure 26.

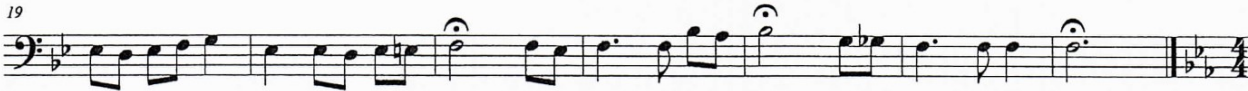
Measures 34-40 of the Alma Mater section. Measure 34 starts with a first ending bracket over measures 34-35. Measure 36 has a second ending bracket over measures 36-37. The music continues with chords and melodic lines in bass clef, 4/4 time, and B-flat major.

Baritone (B.C.)

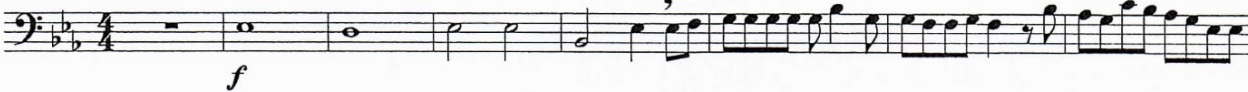
Star Spangled Banner / Alma Mater

arr McKinney

Star Spangled Banner



Alma Mater



Baritone (B.C.)

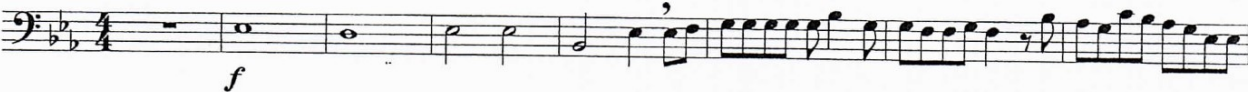
Star Spangled Banner / Alma Mater

arr McKinney

Star Spangled Banner



Alma Mater



Tuba

Star Spangled Banner / Alma Mater

arr McKinney

Star Spangled Banner

Musical notation for the first part of the Star Spangled Banner. It consists of three staves of music in bass clef, 3/4 time signature, and B-flat major. The first staff contains measures 1 through 8. The second staff contains measures 9 through 18, including a first ending bracket with a second ending. The third staff contains measures 19 through 25, ending with a double bar line and repeat sign.

Alma Mater

Musical notation for the Alma Mater section. It consists of two staves of music in bass clef, 4/4 time signature, and B-flat major. The first staff contains measures 26 through 34, starting with a forte (f) dynamic marking. The second staff contains measures 35 through 42, featuring various articulation marks like accents and slurs.

Tuba

Star Spangled Banner / Alma Mater

arr McKinney

Star Spangled Banner

Musical notation for the first part of the Star Spangled Banner. It consists of three staves of music in bass clef, 3/4 time signature, and B-flat major. The first staff contains measures 1 through 8. The second staff contains measures 9 through 18, including a first ending bracket with a second ending. The third staff contains measures 19 through 25, ending with a double bar line and repeat sign.

Alma Mater

Musical notation for the Alma Mater section. It consists of two staves of music in bass clef, 4/4 time signature, and B-flat major. The first staff contains measures 26 through 34, starting with a forte (f) dynamic marking. The second staff contains measures 35 through 42, featuring various articulation marks like accents and slurs.

Star Spangled Banner / Alma Mater

Snare


arr McKinney

Star Spangled Banner

Roll



10



20



26 Alma Mater 9



38



Star Spangled Banner / Alma Mater

Snare

arr McKinney

Star Spangled Banner

Roll



10



20



26 Alma Mater 9



38



Star Spangled Banner / Alma Mater

Bass Drums

arr McKinney

Star Spangled Banner



Alma Mater



Star Spangled Banner / Alma Mater

Bass Drums

arr McKinney

Star Spangled Banner



Alma Mater



Star Spangled Banner / Alma Mater

arr McKinney

Cymbal Line

Star Spangled Banner

10

Alma Mater

f

Detailed description: This block contains the first cymbal line. It starts with a treble clef and a 3/4 time signature. The first staff is labeled 'Star Spangled Banner' and contains measures 1 through 10. Measure 1 is a whole rest. Measures 2-4 contain quarter notes with accents. Measure 5 has a '2' above it. Measures 6-7 have quarter notes with accents. Measure 8 has a quarter note with an accent. Measures 9-10 have quarter notes with accents. A first ending bracket spans measures 9-10, with a '2.' above it. The second staff, starting at measure 10, contains a whole rest followed by eighth notes. The third staff, starting at measure 26, is labeled 'Alma Mater' and contains measures 26 through 31. It starts with a whole rest, followed by quarter notes, and ends with a quarter note and a quarter rest. A dynamic marking '*f*' is placed below the first staff.

Star Spangled Banner / Alma Mater

arr McKinney

Cymbal Line

Star Spangled Banner

10

Alma Mater

f

Detailed description: This block contains the second cymbal line, which is identical to the first. It features the same notation for 'Star Spangled Banner' (measures 1-10) and 'Alma Mater' (measures 26-31), including the first ending bracket and the dynamic marking '*f*'.

Star Spangled Banner / Alma Mater

arr McKinney

Cymbal Line

Star Spangled Banner

10

Alma Mater

f

Detailed description: This block contains the third cymbal line, which is identical to the previous two. It features the same notation for 'Star Spangled Banner' (measures 1-10) and 'Alma Mater' (measures 26-31), including the first ending bracket and the dynamic marking '*f*'.

Star Spangled Banner / Alma Mater

Quad Toms

arr McKinney

Star Spangled Banner

Musical notation for the first 20 measures of the Star Spangled Banner section. It begins with a treble clef, a 3/4 time signature, and a key signature of one flat. The notation includes a repeat sign at the beginning, followed by a melodic line with eighth and quarter notes. A first ending bracket spans measures 7-10, with a second ending bracket above it. The piece concludes with a double bar line and a 4/4 time signature.

Alma Mater

Musical notation for the Alma Mater section, starting at measure 26. It features a treble clef and a 4/4 time signature. The notation includes a dynamic marking of *fp* (fortissimo piano) and a series of eighth notes with accents. A triplet of eighth notes is marked with a '3' below it. The section ends with a double bar line.

Star Spangled Banner / Alma Mater

Quad Toms

arr McKinney

Star Spangled Banner

Musical notation for the first 20 measures of the Star Spangled Banner section, identical to the first page. It begins with a treble clef, a 3/4 time signature, and a key signature of one flat. The notation includes a repeat sign at the beginning, followed by a melodic line with eighth and quarter notes. A first ending bracket spans measures 7-10, with a second ending bracket above it. The piece concludes with a double bar line and a 4/4 time signature.

Alma Mater

Musical notation for the Alma Mater section, starting at measure 26. It features a treble clef and a 4/4 time signature. The notation includes a dynamic marking of *fp* (fortissimo piano) and a series of eighth notes with accents. A triplet of eighth notes is marked with a '3' below it. The section ends with a double bar line.